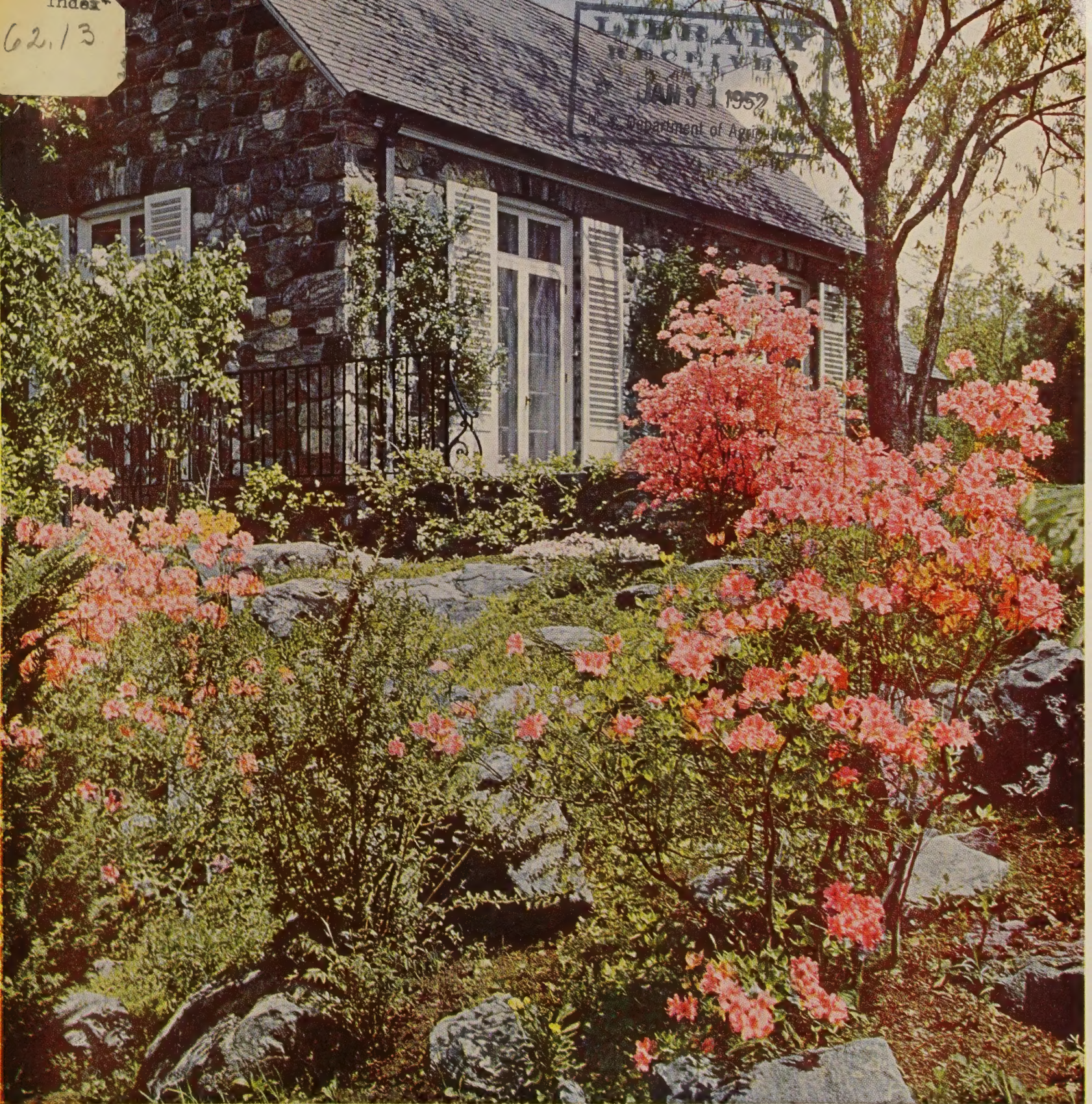


Historic, Archive Document

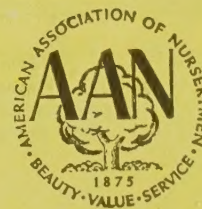
Do not assume content reflects current scientific knowledge, policies, or practices.



Barnes Brothers Nursery Company

Catalog
for Spring
1952

YALESVILLE, CONNECTICUT
Office and Sales Grounds on Route U. S. 5
South of Wilbur Cross Parkway
Telephone: Wallingford 9-4226



A Message from Barnes Brothers:

DEAR FRIENDS:

A home and garden make the best hobby in the world. Roses, trees, shrubs and other plants form a perfect setting for a neat, comfortable home.

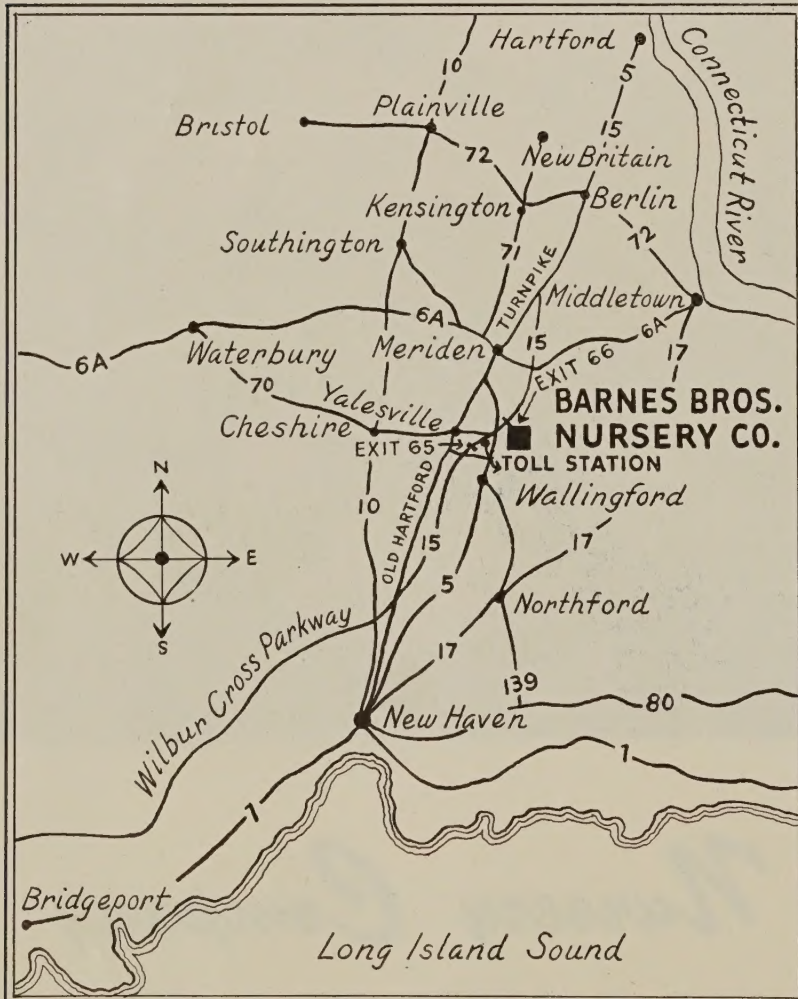
We here at BARNES BROS. are a group of sincere, thoroughly experienced workers who know what to do and how to do it when it comes to growing, handling and packing nursery stock.

Our 60 years in growing nursery stock is your assurance that BARNES BROS. trees are sure to please. So make your home and garden your hobby and use BARNES BROS. trees—we'll try to help you.

Sincerely yours,
THE BARNES BROTHERS NURSERY CO.
By *Joel P. Barnes*

We recommend to our customers *Popular Gardening*, the new all-garden magazine published monthly. *Popular Gardening* contains valuable help for amateur gardeners. Convenient coupon offering a special introductory price to new subscribers is enclosed.

Prices in this catalog apply to Spring, 1952, sales only. After a Summer's growing season, changes occur in the varieties and sizes available



Member:
American
Association
of Nurserymen



Member:
Connecticut
Association
of Nurserymen

Please Read Before Ordering

Terms—Net cash. We will ship orders C.O.D. providing 25% of the total amount is sent with order.

Mail Orders—Small orders can be sent by mail if you include 10% of the catalog price to cover postage and special packing. (Minimum charge 35c.) Overpayments are refunded. All trees over 4 feet tall will be sent by express.

Plants requiring a ball of earth or those too large for economical shipment by common carrier are marked * in the catalog and are offered for local sales only.

Size of orders: Owing to high costs incident to packing and handling, we cannot accept mail orders amounting to less than \$3.00.

Telephone Orders—Call us at Wallingford 9-4226 and your order can be ready for you to pick up or delivered if you live within our delivery area.

Nursery Sales—You may select your plants at our nursery sales grounds. Experienced helpers will assist you and many plants can be taken home in your car. For your convenience, this nursery is open on Sundays during April and May from 9 a.m. to 5 p.m. It is closed every evening.

Transportation Conditions—All goods, unless otherwise specified, are sold F.O.B. our nursery and travel at purchaser's risk and expense. Where a customer lives within approximately 25 miles of our nursery, we can deliver plants without charge on such days as we have trucks in that particular section. We cannot deliver on specific days or at particular hours.

Non-Warranty—(1) If any nursery stock shall prove untrue to the label under which it is sold, provided notice and proper proof thereof are furnished by the purchaser to the seller, the seller shall, at the option of the purchaser either refill that portion of the order which was mislabeled, by any other delivery of stock, or refund the purchase price; but in any case, we are not to be held responsible for a sum greater than the original selling price of such stock. (2) All sales or agreements of sale are made subject to shortage of nursery stock, fire, frost, floods, drought, or other causes beyond the control of the seller.

Guarantee—We guarantee our plants to be of first quality and if any woody plants, purchased from us this Spring, having been properly planted and cared for, should fail to grow, notify us not later than July 1st, 1952, and we will replace the stock free. After July 1st, we will replace at half price. A sales slip or copy of your order MUST accompany any claim for replacement of plants purchased on a "Cash and Carry" basis.

Order Early—Place your order early. Many popular varieties are sold out each year before the season is half over. We will ship at best planting time for your locality.

Inspection—Our nurseries are regularly and thoroughly inspected by the Connecticut Experiment Station and found apparently free from injurious insects and diseases.

Location—We are located on the east side of the North Colony Road, Route 5, 3 miles south of Meriden, 2 miles north of Wallingford, Connecticut. Motorists on Wilbur Cross Parkway use Meriden-Wallingford Exit No. 66. Nursery 200 yards south. Motorists traveling north on the Parkway may turn off at Yalesville, Exit 65, to avoid toll station just ahead. See map.

Connecticut Residents please add 2% sales tax on all items except fruit trees and other food-bearing plants: Asparagus, Rhubarb, Grape and Berry plants.

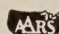
Phone: WALLINGFORD 9-4226

Connecticut Customers Please Add 2% Sales Tax

ROSES

Patented Hybrid Tea Roses

- Charlotte Armstrong** (Plant Patent 455). Streamlined buds open into large, cerise-red flowers on long stems. The plant is vigorous and blooms freely. \$2.00 each, 3 for \$5.25.
- Crimson Glory** (Plant Patent 105). Rich and velvety, dark crimson flowers are large and fragrant. Plant is sturdy, reliable and free blooming. \$1.75 each, 3 for \$4.65.
- Eclipse** (Plant Patent 172). Extra long, tapering buds open into large, well formed, semi-double flowers of rich, golden yellow. \$1.75 each, 3 for \$4.65.
- Forty-Niner** (Plant Patent 792). A dazzling combination of chrome yellow and Chinese red, colors these large, well formed flowers vividly until the petals drop. A vigorous plant. \$2.00 each, 3 for \$5.25.
- Mission Bells** (Plant Patent 923). Clear shrimp pink. Full and richly fragrant flowers. Strong, productive plants. \$2.25 each, 3 for \$6.00.
- Peace** (Plant Patent 591). Soft yellow, blended with pink and cream at petal edges. Extra double and large. \$2.50 each, 3 for \$6.60.
- Rex Anderson** (Plant Patent 335). Ivory-white, perfectly formed, fully double blooms. Free flowering and vigorous. \$1.75 each, 3 for \$4.65.
- Rubaiyat** (Plant Patent 758). Long buds of rich crimson-red. Petals are a lighter shade on the outside. Fragrant. Free flowering. Extra tall, hardy and vigorous. \$1.75 each, 3 for \$4.65.
- San Fernando** (Plant Patent 785). Intense, dazzling red. Long lasting, un fading and fragrant. Beautiful red buds. \$1.75 each, 3 for \$4.65.
- Sutter's Gold** (Plant Patent 885). Long-pointed buds of yellow, brushed with orange and red. The most fragrant yellow Rose. Vigorous, free flowering, disease resistant. \$2.25 each, 3 for \$6.00.

 Indicates All America Rose Selection

Standard Hybrid Tea Roses

- Countess Vandal**. A beautiful Rose, blending copper, salmon-pink and gold tones. Vigorous, dependable plant.
- Etoile de Hollande**. Ever popular, dark red with large, fragrant flowers throughout the season.
- McGredy's Ivory**. Ivory-white buds open into big snow-white flowers. Moderately fragrant. Vigorous, disease resistant, prolific bloomer.
- Mrs. P. S. DuPont**. Deep golden yellow flowers are produced freely. Dependable.
- Pink Dawn**. Clear pink, fully double and fragrant. Sturdy, hardy and free blooming.
- Pres. H. Hoover**. A popular time-tested combination of red and yellow. A vigorous, free flowering plant.

\$1.30 each, 3 for \$3.75

Climbing Roses

- Blaze**. Bright red. Hardy and dependable. \$1.30 each, 3 for \$3.75.
- Climbing Crimson Glory** (Plant Patent 736). The beautiful, dark red flowers of the bush Crimson Glory are borne on this gorgeous climber. Winter protection is necessary where temperatures drop to zero. \$2.00 each, 3 for \$5.25.
- Climbing Talisman**. Climbing form of the well-known Talisman Rose. Repeat blooming. A good, sturdy Rose. \$1.30 each, 3 for \$3.75.
- Dr. J. H. Nicholas** (Plant Patent 457). Huge, double, clear pink, fragrant flowers. Repeat blooming. \$2.00 each, 3 for \$5.25.
- Golden Glow** (Plant Patent 263). Large, double flowers of spectrum yellow. Makes a marvelous display. Fragrant; hardy. A Brownell origination. \$1.75 each, 3 for \$4.65.
- High Noon** (Plant Patent 704). Beautiful golden yellow, double flowers on long, smooth stems. Repeat blooming. Winter protection necessary. \$2.00 each, 3 for \$5.25.
- Paul's Scarlet**. Large, double, intensely red flowers are produced abundantly in June. An old favorite. \$1.30 each, 3 for \$3.75.
- White Dawn**. Pure white, double, Gardenia-like flowers. Free blooming. Hardy. America's finest everblooming white climbing Rose. \$1.30 each, 3 for \$3.75.

When planting Roses, be sure that the joint between the root and the top is 3 inches below the surface of the soil. Hill extra soil about the lower 6 inches of the stems and let it remain until buds start.

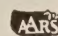


Hybrid Tea Roses in a Small Formal Garden

Floribunda Roses

These are Bush Roses, with clusters of medium-sized blooms from early Summer to late frosts, giving a long, continuous color display. Growing from 1½ to 3 feet or more high, they are splendid to use in perennial or shrub borders, in Rose beds, as hedges or even among evergreens.

- Betty Prior** (Plant Patent 340). Sprays of single flowers, clear pink within and deeper outside. Tall, vigorous plants which blossom persistently and abundantly. \$1.50 each, 3 for \$3.90.
- Chatter** (Plant Patent 739). Large, velvety flowers of bright crimson-red in great clusters. Unequaled for masses of color. Very hardy, disease-resistant. Grows 18 in. tall. \$1.50 each, 3 for \$3.90.
- Dagmar Spaeth**. Large cluster of pure white flowers are produced freely all Summer. \$1.50 each, 3 for \$3.90.
- Donald Prior** (Plant Patent 377). Rich, bright red, semi-double flowers in immense clusters are borne in profusion from June to November. Grows about 3 ft. tall. Excellent foliage. \$1.50 each, 3 for \$3.90.
- Floradora**. Brilliant orange-red, Camellia-like flowers. Free flowering, sturdy and vigorous; a tall growing plant. \$1.50 each, 3 for \$3.90.
- Goldilocks** (Plant Patent 672). Golden yellow, about 3 in. across. Blooms profusely. Grows about 2½ ft. tall. \$1.50 each, 3 for \$3.90.
- Pinocchio** (Plant Patent 484). Salmon-pink flushed with gold. Prolific and continuous in flowering. \$1.50 each, 3 for \$3.90.
- Vogue** (Plant Patent 926). New for 1952 Winner of All America Award and of medals from coast to coast. Bright coral-rose flowers, measuring 3 to 4 in. across. Spicy fragrance. Free-blooming. Compact, bushy and upright. \$2.25 each, 3 for \$6.00.

 Indicates All America Rose Selection

HARISON'S YELLOW

Old-fashioned, semi-double, bright yellow Roses in May; ferny foliage; spiny stems. Extra hardy, trouble free, rugged bushes, growing 6 to 8 feet tall. \$1.30 each, 3 for \$3.75.

Rugosa Roses

These bush Roses are very hardy and trouble free. They are wonderful for a thorny "living fence" (plant 3 to 4 feet apart), in mixed shrub borders or as specimens. They do not need spraying or extra soil preparation. For pruning, cut out old canes and shorten new ones to 4 feet.

Grootendorst Supreme. An improved form with fringed, red flowers in large clusters. Grows 4 to 5 ft. tall.

Sarah Van Fleet. Bright rose-pink and fragrant. Blooms in Summer and Fall. Grows 6 to 8 ft. tall.

\$1.30 each, 3 for \$3.75

Connecticut Customers Please Add 2% Sales Tax

*Barnes
Hybrid
Tea
Roses*

For Description
See Page 3



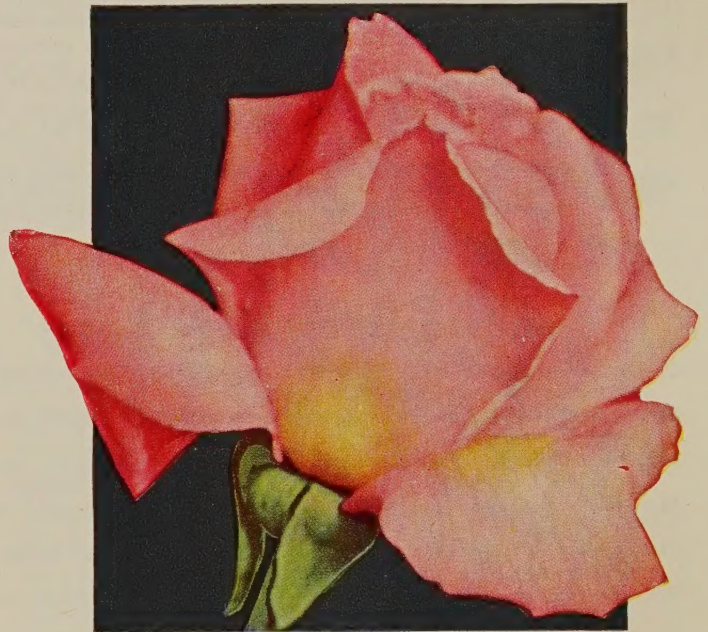
Eclipse
(Pat. No. 172)



Crimson Glory (Pat. No. 105)



Charlotte Armstrong (Pat. No. 455)



Pink Dawn

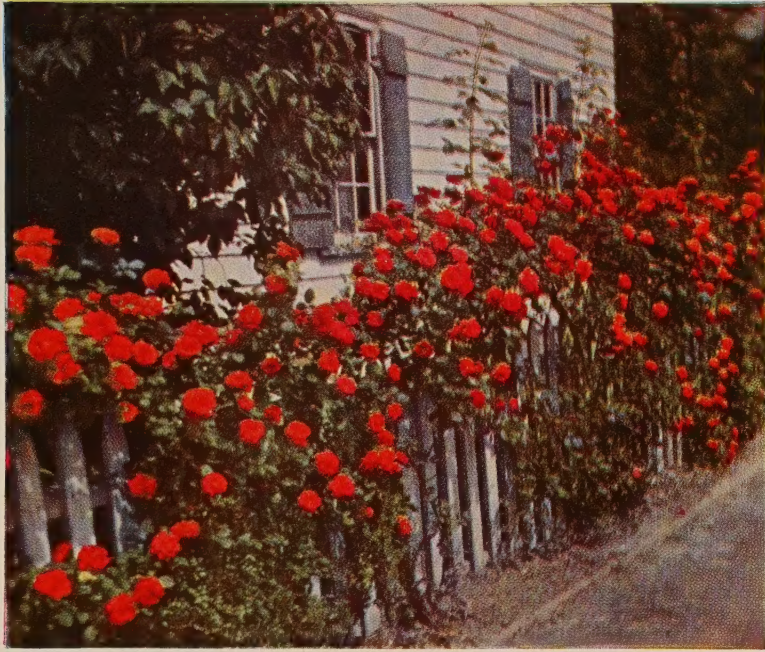


Peace (Pat. No. 591)



McGredy's Ivory

Barnes Climbing and Floribunda Roses



Blaze



Donald Prior (Pat. No. 377)

For
descriptions
see
page 3

Quantities
of Rose
Plants
Are Limited
Order
Early

All Roses are 2 yr. field-grown, top quality plants. Shipping season for Dormant Roses ends in early May.

Potted Rose Plants
Are Available at the
Nursery after the
Middle of May



Goldilocks (Pat. No. 672)



Golden Glow
(Pat. No. 263)

PRATT'S GARDEN AND ROSE DUST

An all-purpose garden and rose dust, providing a single product to combat the majority of sucking and chewing insects and fungus diseases on all flowers and vegetables—especially effective on roses.

Duster containing
1 lb. dust, **\$1.35**
2 lb. canister
of dust, **\$1.50**



Vogue (Pat. No. 926)

BARNES HARDY FLOWERING SHRUBS

FOR FOUNDATIONS, SCREENS AND BORDERS

All of our shrubs are carefully grown with ample tops and fine roots. They are grown in the best way and we know they will please you as they have delighted so many other purchasers.

Approximate heights at maturity are indicated immediately after names.

All items marked * are offered for sale only at our nursery, or within local truck delivery zone.

SHADBLOW

Amelanchier canadensis. 25 ft. Tree-like with white flowers early in Spring, blue berries which birds love follow. This hardy, native plant thrives in acid soil, in shady woodland and moist places. 2-3 ft., \$1.25 each.

RED CHOKEBERRY

Aronia arbutifolia. 6-8 ft. The crimson Fall foliage and abundant clusters of bright red fruits, which last well into the Winter, glorify a dependable, native shrub. Small, white flowers in May. Stands shady or wet places and may be used well at the shore, in cities, as a border or in a hedge. Birds like the fruit. 2-3 ft., \$1.25 each.

*AZALEAS

(Available only at the nursery or for local truck deliveries)

***Azalea amoena.** Dwarf, semi-evergreen with rich, magenta-red flowers, frequently double (hose in hose), in mid-May. This is the hardest of the red evergreen types but needs protection north of this area. Grows well under city conditions. 10-12 in., \$2.75 each.

***A. calendulacea (Flame Azalea).** 9 ft. A beautiful, sturdy and dependable, native shrub with showy flowers, varying shades of yellow and orange, in early June. May be grown in moist soil, in sun or shade. 18-24 in., \$4.50 each.

***A. Ghent Hybrids.** 3-5 ft. This is a beautiful and hardy group which flowers in early June. 15-18 in., \$4.75 each.

Bouquet de Flore. Single. Bright salmon-pink. Potted.

Daviesi. Single. White with yellow blotch. Fragrant.

Gloria Mundi. Single. Bright orange-red.

Narcissiflora. Double. Light yellow. Potted.

Sang de Gentbrugge. Single. Deep orange-crimson. Potted.

***A. hinodegiri.** Dwarf with bright rose-red, single flowers. Needs protection here. Semi-evergreen. 10-12 in., \$2.75 each.

***A. kaempferi (Torch Azalea) Hybrids.** 5 ft. Bright and showy flowers. Plant where there is some shade. 12-15 in., \$4.50 each.

Fedora. Vivid pink flowers in large clusters. Hardy.

Othello. Brilliant orange-red. Hardy to Boston.

***A. kosterianum (Mollis Hybrid Azalea).** 5 ft. Large flowers, mixed colors of bright red, yellow or orange, in late May. From seedlings, 15-18 in., \$3.50 each.

Col. F. R. Durham. Large, bright yellow. Very fine new variety. Potted, 15-18 in., \$4.75 each.

J. C. Van Tol. Bright orange-red flowers. 15-18 in., \$4.75 each.

Koster's Brilliant. Orange-salmon. Potted. 15-18 in., \$4.75 each.

BUTTERFLYBUSH

Buddleia alternifolia (Fountain Butterflybush). 10 ft. Long, arching branches covered with lilac flowers make this ample shrub a fountain of delicate loveliness in early June. Grows well on dry or sandy soils. Flowers on previous season's growth. 2 yr., 90c. each.

Orange-eye Butterflybush. 6 ft. The ends of the gracefully arched branches are thickly covered with flowers from August to late Fall. Splendid as a background for an herbaceous border. Prune close to the ground each Spring. Hill extra soil about the base of the stems each Fall for Winter protection.

B. Ile de France. Deep purple flowers. No. 1, 90c. each.

B. White Queen. White flowers. No. 1, 90c. each.

BEAUTYBERRY

Callicarpa dichotoma. 4 ft. A dainty shrub with clusters of shiny, lavender berries in the Fall. Small, pink flowers.

For care, see suggestions for Orange-eye Butterflybush. 2-3 ft., 90c. each.

SWEETSHRUB

Calycanthus. 6-9 ft. Double, reddish brown flowers in May; makes a neat shrub suitable for a lightly shaded spot. Likes rich, moist soil. 18-24 in., \$1.00 each.

SUMMERSWEET

Clethra alnifolia. 6-9 ft. This good, hardy, native shrub deserves wider use. The flowers are white, fragrant, small but are solidly packed on 4 to 6 in. spikes in late July. It likes shady, damp, places with acid soil, is good to grow on banks and does extremely well along the shore. 2-3 ft., \$1.25 each.

SHRUB DOGWOOD (Cornel)

These are excellent, very hardy shrubs. Small, white flowers are in clusters; berries, white to blue, are liked by birds; they are worth planting for stem color alone. They will stand shade, wet soils, city or shore conditions and hold banks well. The young wood is brightest, so prune out old stems and keep new growth coming.

Red-branched Cornel. 6-8 ft. Blazing red stems make a vivid spot of color in the Winter. 2-3 ft., 90c. each.

Goldentwig Cornel. 6-8 ft. Bright yellow twigs make a striking contrast with above. 2-3 ft., 90c. each.

SMOKEBUSH

Cotinus coggygia. 15 ft. Tall, tree-like favorite. Its fluffy and delicate flowering and fruiting parts look like clouds of smoke. 2-3 ft., \$1.50 each.

FLOWERING QUINCE

Cydonia japonica. 6 ft. Scarlet flowers in early May. Selected, upright type. Makes an effective, thorny barrier. An old time favorite. 18-24 in., \$1.00 each.

DEUTZIA

Deutzia gracilis (Slender Deutzia). 3 ft. Splendid, low, mounded shrub, a mass of white flowers in May. 15-18 in., \$1.25 each.

D. Pride of Rochester. 8 ft. Tall and upright. Flowers are white with pinkish tinge, double, in June. 2-3 ft., 90c. each.

REDVEIN ENKIANTHUS

***Enkianthus campanulatus.** 30 ft. Handsome, slow growing shrub of the Azalea family. Drooping clusters of reddish, bell-like flowers. Bright red Fall color. Needs acid soil. B&B, 18-24 in., \$3.00 each.

EUONYMUS

Euonymus europaeus (Spindletree). 20 ft. Red-orange fruits in Fall, reddish foliage which is held late. Hardy, withstanding difficult city conditions well. 2-3 ft., \$1.00 each.

SHOWY FORSYTHIA

Forsythia spectabilis. 9 ft. Rich golden bells; most showy form. Upright grower. 2-3 ft., 90c. each.

ALTHEA, or ROSE-OF-SHARON

Hibiscus syriacus. 15 ft. These tall, Oriental shrubs bloom in late Summer and Fall when few shrubs are in flower. They thrive near the shore and are good for city plantings. Stiffly upright in habit. Give an extra amount of water during the first Summer and protect the first Winter by hilling extra soil about the base of the plant. Pink, Red, White; all double; state color. Nice, heavy plants. 2-3 ft., 90c. each.

H. coelestis. Large, single, blue flowers; dwarfer than above. 2-3 ft., 90c. each.

H. rosea grandiflora. Huge, single, rose-colored flowers. 2-3 ft., \$1.50 each.

HYDRANGEA

Hydrangea arborescens grandiflora (Hills of Snow). 4 ft. Large, rounded clusters of white flowers from June to September. Easily grown. May be cut back each Spring. 2 yr., \$1.25 each.

H. Domotoi (Blue Hydrangea). Dwarf. Hardest Blue Hydrangea available, but too tender to be left outdoors without adequate protection. Cover stems with soil to depth of 12 in. or dig and store in frost-proof cellar, replanting in the Spring. Flowers are pink in alkaline soils, blue in acid soils. Aluminum sulfate will increase acidity. 2 yr., \$2.00 each.

H. paniculata grandiflora (Peegee Hydrangea). 10 ft. Large pyramids of white, pink-tinged flowers. August-October. Makes a large, tall plant if not pruned. 2-3 ft., \$1.25 each.

WINTERBERRY

Ilex verticillata. 9 ft. Upright shrub with red berries in Fall and Winter. Plant 2 or 3 together to obtain fruit. Grows in any good garden soil. 3 ft., \$2.00 each.

Hardy Flowering Shrubs—Continued

KERRIA

Kerria japonica pleniflora. 4-6 ft. Bright yellow, double flowers in May. Bright green twigs. An old time favorite. 2-3 ft., \$1.50 each.

BEAUTYBUSH

Kolkwitzia amabilis. 10 ft. Graceful shrub with pink flowers in June. Fine, glossy foliage. Needs no special care. 2-3 ft., \$1.00 each.

HONEYSUCKLE

Lonicera tatarica rosea. 8 ft. Beautiful strain of Bush Honeysuckle with rose-colored flowers in June; scarlet fruits; hardy and vigorous; attractive, dark foliage. 2-3 ft., 90c. each.

MOCKORANGE

Philadelphus, Atlas. Immense, pure white, single flowers, measuring 2 in. and over across. A good, upright, hardy shrub that will make a stupendous display in June. 2-3 ft., \$1.50 each.

P. coronarius. 8 ft. Creamy white, single, fragrant flowers in May. Will grow in shade. 2-3 ft., 90c. each.

P. virginialis. 8 ft. Bears quantities of fragrant, semi-double, white flowers in June, with recurring bloom late in the Summer and Fall. 2-3 ft., \$1.25 each.

FLOWERING ALMOND

Prunus glandulosa. 4 ft. Its arching branches are covered with dainty, pink rosettes in May. 2-3 ft., \$1.25 each.

***FIRETHORN**

***Pyracantha coccinea lalandi.** 6 ft. Where this plant is hardy and grows well, it is a gorgeous and showy spectacle in the Fall and Winter. It must be used with discretion for it is not ordinarily hardy north of the Connecticut shore line. Lustrous foliage and dense growth add to its Summer beauty. Suitable to use in a foundation planting or to train against a warm wall. It is thorny and will stand city conditions. 5 in. pot plants, \$2.50 each.

JETBEAD

Rhodotypos scandens. 6 ft. A neat shrub with white flowers in May and June; shiny black berries; grows in shade and difficult places. 2 ft., \$1.25 each.

SPIREA

Spiraea, Anthony Waterer. 3 ft. A old favorite with flat clusters of rosy-red flowers all Summer. Good to plant at shore places. 3 yr., \$1.00 each.

S. thunbergi. 5 ft. Tiny leaves and flowers give a soft, feathery effect. April blooming. 2-3 ft., 90c. each.

S. vanhouttei (Vanhoutte Spirea). 6 ft. In late May and June its arching branches are white with masses of flowers. 2-3 ft., 75c. each.

SYMPHORICARPOS

These two small, hardy, native shrubs are fine textured and do not mind shade and city conditions. Birds like the berries.

Symphoricarpos albus (Snowberry). 6 ft. White berries in late Summer and Fall. 2-3 ft., 75c. each.

S. orbiculatus (Coralberry). 3-5 ft. Small, clustered, coral-red berries in Fall. It spreads readily and is good to use on banks. 2-3 ft., 75c. each.

LILAC

Syringa persica (Persian Lilac). 10 ft. Fragrant, violet flowers in May and June, often with recurring bloom in Fall. Flowers freely when young. Broad, billowy, graceful. 2-3 ft., \$1.00 each.

HYBRID LILACS

Charles Joly. Double; dark red-purple. Fragrant.

Ellen Willmott. Double. Beautiful white pyramids of flowers. Late.

Michael Buchner. Double. Lilac-blue.
18-24 in.....\$1.50 each
2-3 ft..... 2.00 each

TAMARIX

Small, pink, feathery flowers and tiny leaves give an unusually light and airy effect. These do well on fairly dry soil and are excellent for shore plantings.

Tamarix africana. Upright and tall. Blooms in early Summer. 2-3 ft., 90c. each.

T. odessana. 6 ft. Gray-green foliage; pink flowers in late Summer. Prune in early Spring. A fine, small shrub. 2-3 ft., 90c. each.

VIBURNUM

Viburnum burkwoodi (Burkwood Viburnum). 6 ft. Wonderfully fragrant, pinkish white flowers, April-May. Makes a broad, round bush. Vigorous growing. Its spicy sweetness is delightful in any garden. 18-24 in., \$5.00 each.

V. tomentosum (Doublefile Viburnum). 9 ft. Splendid, dense shrub with marked horizontal branching. In May creamy white flowers perch on the upper sides of the branches; bright red fruits follow. Shiny, green foliage turns dark red in the Fall. 2-3 ft., \$1.25 each.

V. tomentosum plicatum (Japanese Snowball). 10 ft. Large, round clusters of white flowers in May. Heavy, dark, lustrous foliage. Stands city conditions well. An old favorite for a lawn specimen. 2-3 ft., \$1.25 each.

WEIGELA

Weigela hendersoni. 8 ft. Large, rose-pink flowers. Vigorous and splendid. May. 2-3 ft., 90c. each.

W. vaneckii. 6 ft. Deep, rosy red flowers in May and June, and again in the late Summer and Fall. Hardy, upright grower. Splendid foliage. 2-3 ft., \$1.25 each.

Connecticut Customers Please Add 2% Sales Tax

HEDGES

ARALIA (Acanthopanax pentaphylla). 9 ft. Aralia makes a superb, thorny barrier with gracefully arched, spiny branches and bright green foliage. It thrives under most difficult conditions. 12-18 in., 20c. each in a quantity of 10 to 50 plants; 16c. each in a quantity of 50 or more plants.

GREEN BARBERRY (Berberis thunbergi). 4 ft. Beautiful, familiar, ever useful. Red berries. Makes a thick, thorny barrier under adverse conditions. 3 yr. heavy plants, 12-18 in., \$4.00 for 10, \$30.00 for 100; 18-24 in., \$6.00 for 10, \$45.00 for 100.

RED BARBERRY (Berberis thunbergi atropurpurea). Dark red leaves throughout the season. Be sure to plant in a sunny place. 12-18 in., 60c. each, \$4.50 for 10; 18-24 in., 75c. each, \$6.50 for 10.

CALIFORNIA PRIVET. Famous for its bright green foliage which stays green until late Fall. Not reliably hardy north of Connecticut.

IBOLIUM PRIVET. Upright, bushy Privet that will stand cold Winters. Splendid for high screens and formal hedges.

Privet Prices

	10 to 50 plants	50 or more
12-18 in.,	heavy plants..15c. each	12c. each
18-24 in.....	20c. each	16c. each
2-3 ft.....	25c. each	20c. each

Shrubs for Living Fences

These splendid shrubs, planted 18 to 24 inches apart, will make grand hedges. Hardy, dependable, easily cared for; informal, practical, useful and beautiful.

LONICERA tatarica (Tatarian Honeysuckle). Bushy and tall. Pink flowers in June. Currant-like red fruits in July.

VAUHOUTTE SPIREA (Spiraea vanhouttei). 6 ft. Its gracefully arched branches are white with flowers in late May or early June.

SNOWBERRY (Symphoricarpos racemosus). 5 ft. Makes a light, airy hedge with white berries in Fall. Doesn't mind shady places.

Special Grade for Hedging: 2-year, 12-18 inch plants, \$3.00 for 10, \$10.00 for 50

VINES

AMPELOPSIS quinquefolia (Virginia Creeper). Five-parted leaves turn crimson in the Fall. Rapid growing for fences, rocky slopes and banks. Blue-black berries which the birds like. 50c. each, 3 for \$1.35.

A. tricuspidata (Boston Ivy). Ideal to use in cities, not fussy about soil, not troubled by pests nor injured by smoke or dirt. Glossy, dark green leaves, red in Fall, make a perfect cover for brick or stone. 75c. each, 3 for \$2.00.

ARISTOLOCHIA durior (Dutchman's Pipe). An old favorite, vigorously growing and twining vine. Large, overlapping leaves make it grand for screening purposes. \$1.75 each.

BIGNONIA radicans (Trumpet Vine). High climbing, with large, orange-scarlet flowers which bloom nearly all Summer. 50c. each, 3 for \$1.35.

CELASTRUS orbiculatus (Oriental Bittersweet). A vigorous vine with orange-red berries that are splendid for Winter decoration. Plant in groups. 50c. each, 3 for \$1.35.

CLEMATIS paniculata (Sweet Autumn Clematis). Lovely, white flowers in September. Foliage remains a glossy green until Winter. Easily grown and unusually free from pests. 75c. each, 3 for \$2.00.

CLEMATIS HYBRIDS:

Duchess of Edinburgh. Double white flowers in June. Blooms on previous season's growth. Needs extra protection. \$1.75 each.

Jackmani. Large, purple flowers, 4 to 5 in. across, are freely produced all Summer on this colorful, attractive and well known vine. Flowers on current season's growth. \$1.75 each.

Ville de Lyon. Red-purple flowers in late Summer on current year's growth. Hardest of these hybrids. \$1.75 each.

**EUONYMUS fortunei
EUONYMUS fortunei vegeta
HEDERA helix baltica**

See **BROADLEAF EVERGREENS** on Page 11

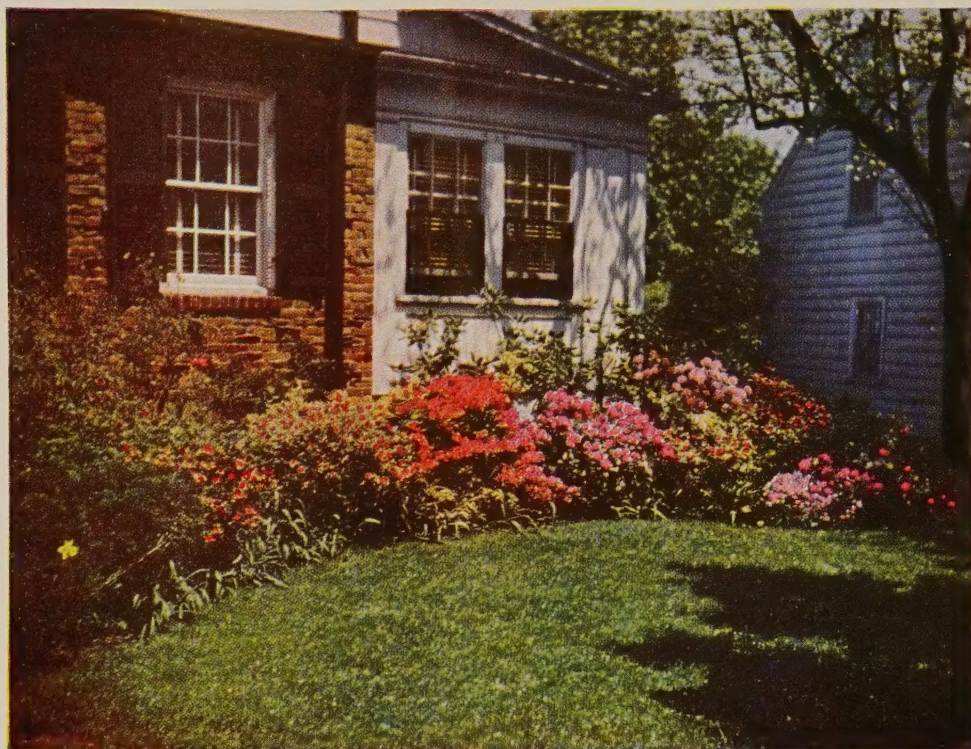
LONICERA heckrottii (Goldflame Honeysuckle). Rose-coral trumpets lined with gold. Blooms from May until frost and can be trained as a shrub, hedge, vine or ground cover. \$1.00 each.

L. japonica halliana (Hall's Japanese Honeysuckle). An old favorite for its fragrance and dark, semi-evergreen leaves. Yellow and white flowers. 50c. each, 3 for \$1.35, 10 for \$4.00.

WISTERIA chinensis. Drooping clusters of lavender flowers in May. Grows rapidly. \$1.00 each.

Connecticut Customers Please Add 2% Sales Tax

Barnes Flowering Shrubs



Colorful Foundation Planting Featuring Azaleas Othello and Fedora in Center of Illustration. See page 6 for Azalea Varieties. See page 11 for Evergreen Shrubs.



Flowering Almond



Red Flowering Quince

For descriptions and prices
see pages 6 and 7



Hybrid French Lilacs



Beautybush



Summer Sweet



Hydrangea, Domotoi

Sweet Shrub (Calycanthus)



Virginal Mockorange



Spirea, Anthony Waterer



Double Red Althea

Duchess of Edinburgh Clematis



Ville de Lyon

Clematis Vines

Jackmani



Double Yellow Kerria



Buddleia, Ile de France

FLOWERING AND SHADE TREES

BARNES BROS. THRIFTY TREES will give generous shade within a few years. Choose with assurance that you will receive expertly grown, well-rooted specimens. Improve your home by planting trees. Trees will be shipped by railway express.

All items marked * are offered for sale only at our nursery, or within local truck delivery zone

***SILVER MAPLE** (*Acer dasycarpum*). 100 ft. Rapid growth quickly matures this tall, broad and gracefully branched Maple. Its chief fault is its brittleness. 8-10 ft., \$4.50 each.

***RED JAPANESE MAPLE** (*Acer palmatum atropurpureum*). 20 ft. Slow growing and shrub-like with deep red foliage throughout the season. Popular for lawn specimens. Grafted plants, 18-24 in., \$7.50 each.

***NORWAY MAPLE** (*Acer platanoides*). 80 ft. The most popular tree for street planting. A rounded, compact head and large leaves give dense shade. 6-8 ft., \$6.00; 1 3/4 in. to 2 in. diameter, 10-12 ft., \$12.00 each; 2-2 1/2 in., 12-14 ft., \$15.00 each.

***SCHWEDLER MAPLE** (*Acer platanoides schwedleri*). A form of Norway Maple whose leaves are red in the Spring and turn dark green in the Summer. 6-8 ft., \$6.00 each; 8-10 ft., \$8.00 each.

WHITE BIRCH CLUMPS

(*Betula alba*)

Silvery white Birches grown so you may have a cluster of these beautiful trees; 2 or 3 stems on one root. 4-5 feet tall, \$2.95 each.

CUTLEAF WHITE BIRCH

(*Betula alba laciniata*)—40 feet

This white barked, graceful tree is one of the most beautiful to plant on a lawn. Leaves are light green and finely cut. Plant in early Spring. 5-6 feet, \$4.50 each.

PAPER BIRCH

(*Betula papyrifera*)

These are the lovely and graceful white Birch trees of our northern woods. The characteristic white bark is not evident while the trees are small. Plant in groups for a naturalistic effect. Plant in Spring. 5-6 feet, \$3.25 each, \$9.00 for 3.

RED BUD

(*Cercis canadensis*)—20 feet

A small, shrubby tree. In Spring before the leaves unfold, it bears masses of rose pink flowers. Effective among evergreens. 3-4 feet, \$1.50 each.

FLOWERING DOGWOOD

(*Cornus florida*)

A favorite small tree with lovely white flowers and bright Autumn color. Native, hardy and beautiful. Plant in Spring. 3-4 feet, \$3.50; 4-5 ft., \$5.00 each.

Pinkflowering DOGWOOD

(*Cornus florida rubra*)

A form of above with pink flowers, dwarfer and less hardy. 3-4 feet, \$6.00 each.

PAUL'S SCARLET THORN (*Crataegus oxyacantha pauli*). 25 ft. Tall and slender tree with double, rose-red flowers which come in late May. 5-6 ft., \$5.00 each.

MORaine LOCUST (*Plant Patent 836*). This is a new and splendid, quick growing shade tree. Lacy foliage. No thorns or seed pods. A clean and hardy lawn tree. Vase shaped when young, broadening with maturity. 6-7 ft., \$8.00 each.

GOLDEN CHAIN TREE (*Laburnum vossii*). 15 ft. Slender tree with long, drooping clusters of bright yellow flowers in the Spring. A protected spot is recommended in Connecticut. Not hardy north. 5-6 ft. branched, \$6.00 each.

MAGNOLIA soulangeana. 20 ft. The exotic lawn tree with huge, pink and white flowers in early May. Big, bold leaves. 3-4 ft., \$6.00 each.

MAGNOLIA soulangeana nigra. This form has dark purple flowers. 2-3 ft., \$6.00 each.

***SCARLET OAK** (*Quercus coccinea*). 80 ft. A handsome, straight tree, forming a broad head. Leaves are deeply cut and turn bright red in the Fall. 12-14 ft. tall, 2-2 1/2 in. diameter, \$25.00 each.

***PIN OAK** (*Quercus palustris*). 60 ft. This splendid tree is well adapted to lawn and street planting because of its symmetrical habit, rapid growth and fine foliage. Sharply pyramidal when young, widening with age. Plant in early Spring. 6-8 ft., \$6.00 each.

MOUNTAIN ASH

(*Sorbus aucuparia*)—25 feet

An attractive hardy tree for lawns, especially admired for its clusters of orange-scarlet berries from July until Winter. Birds like the fruit. 6-8 feet, \$4.50 each.

WEeping WILLOW

(*Salix babylonica*)—40 feet

Long, pendulous branches droop gracefully to the ground. The trees create exquisite effects beside waterways but will thrive also in drier locations. 5-6 ft., \$2.50 each; 6-8 ft., \$3.50 each.

FRENCH PUSSY WILLOW

(*Salix*)

This tall shrub is planted for its large, silvery-pink and furry catkins which appear on the first warm days of early Spring or late Winter. Stems are long and willowy and may be easily forced indoors. 2-3 feet, \$1.50 each.

TREE WISTERIA. A beautiful spectacle in

May when this wide-spreading, low tree is a mound of drooping clusters of purple-blue flowers. Straight stems, 3 to 4 ft. tall. Grafted from flowering wood to bear soon. \$3.50 each.

NUT TREES

CHINESE CHESTNUT. Tall (50-60 feet at maturity). Sturdy, fast-growing, blight-resistant trees. Splendid for shade as well as for large, sweet nuts. As cross fertilization is required for nut production, plant two or more trees. Provide a sunny place with rich, deep soil. These trees are about as hardy as Peach trees and are raised from seeds of goodbearing trees. 2-yr., 2-3 ft., \$1.50 each, 2 for \$2.75.

THOMAS BLACK WALNUT. 50 ft. A grafted variety of the hardy, native tree that bears young, often the second year after planting. Grows in most locations but likes rich, moist soils. Nuts are large, of excellent flavor, abundantly produced and readily cracked. A splendid combination shade and crop tree. 3-4 ft., \$3.00 each.

WILLSON WONDER ENGLISH WALNUT. 30 ft. A fast growing tree for shade as well as for large, delicious nuts which are abundantly produced. Not hardy in extreme cold. Plant in a protected place where temperatures go to zero. 3-4 ft., \$3.00 each.

Connecticut Customers Please Add 2% Sales Tax.

FLOWERING CRABAPPLES

(*Malus*)—15 feet

These neat little trees make handsome specimens for small lawns, especially in April and May when covered with flowers. Small Apples which follow are appreciated by the birds. Hardy and easily grown.

Almey. A beautiful new variety, with large, fire-red flowers, starred white at each center. Scarlet fruits make excellent Winter food for birds. Hardy. Grows about 20 ft. tall. 4-5 ft., \$3.50 each.

Bechtel's Crab (*Malus ioensis plena*). Large, double pink flowers. 3-4 ft., \$2.50 each.

Carmine Crab (*Malus atrosanguinea*). Brilliant carmine-rose flowers. Makes a broad and spreading tree. One of the showiest varieties.

Dolgo Crab. White flowers and large, bright red Apples which make superb jelly. A double purpose tree.

Eley Crab (*Malus purpurea eleyi*). Winged flowers and fruits; splendid and showy; fruits suitable for making jelly.

Hopa Crab. Large, rose-colored flowers; shiny orange and red fruits which make good jelly.

Redbud Crab (*Malus zumi calocarpa*). Red buds, white flowers, brilliant clusters of small red fruits lasting into Winter.

Heavy, 2-year trees, 4-6 feet tall, \$2.50 each, 4 for \$9.50, except as noted above

FLOWERING CHERRY

(*Prunus, Kwanzan*)

Large, double, deep pink flowers in Spring. The tree is upright and vigorous in growth. It is one of the most reliable of the beautiful flowering Cherries. 4-5 feet, \$3.50 each.

PURPLELEAF PLUM

(*Prunus, Thundercloud*)

This is a small, upright growing tree with dainty pale pink flowers and dark red-purple foliage which stays dark throughout the Summer. 4-5 feet, \$2.50 each.

BROADLEAVED EVERGREENS

All items marked * are offered for sale only at the nursery sales grounds, or within local truck delivery zone

***DAPHNE cneorum** (*Rose Daphne*). 6 in. Low and spreading with rose-pink, spicily fragrant flowers in May. Roots like a cool, moist location. 9-12 in., potted, \$2.00 each.

EUONYMUS fortunei (radicans) (*Winter-creeper*). Evergreen vine which clings readily to walls and makes a good ground cover. 2 yr., \$1.25 each.

E. fortunei vegeta (*Evergreen Bittersweet*). Rounded green leaves and orange fruits in Autumn. A hardy, self-clinging vine or low shrub if no walls are close. 2 yr., \$1.25 each.

HEDERA helix baltica (*English Ivy*). One of the best evergreen vines for walls, also a superb ground cover. This form is harder than the regular English Ivy. 50c. each, \$4.50 for 10.

***KALMIA latifolia** (*Mountain Laurel*). Pink and white flowers, in large clusters, bloom in June. This popular and practical native evergreen shrub is one of the best for woodland, garden and foundation plantings. Will grow tall but may be kept low. 18-24 in., \$4.00 each.

***LEUCOTHOE catesbaei** (*Drooping Leucothoe*). Glossy, dark green leaves turn bronzy in Fall; white flowers in Spring. Low and spreading. Excellent to use in borders or in the foreground of informal evergreen plantings. 12-18 in., \$3.00 each.

Holly

***Ilex crenata**. Tall, upright evergreen shrub with lustrous dark leaves; black berries. Splendid for hedges or screen plantings. 2-3 ft., \$5.00 each.

***I. crenata convexa**. Dwarf, growing broader than high. Small leaves, resembling Boxwood. 15-18 in., \$4.75 each.

***I. opaca** (*American Holly*). This is a strain selected to bear fruit abundantly. The beautiful red berries and dark green leaves, lustrous and spiny, symbolize the gaiety of our Christmas season. Slow growing but can eventually make large trees. Give a protected spot north of the Connecticut and Massachusetts shore areas. Cutting grown. 18-24 in., \$6.00 each; 2-3 ft., \$8.00 each.

PACHYSANDRA terminalis (*Japanese Spurge*). For a dense, evergreen ground cover in places too shady for grass. 1 yr., \$1.00 for 10, \$8.00 for 100.

***PIERIS floribunda** (*Mountain Andromeda*). 3 ft. White flowers in erect clusters early. Splendid, hardy, dwarf evergreen shrub that is easily grown. 12-15 in., \$3.95 each.

***P. japonica** (*Japanese Andromeda*). 9 ft. Upright shrub with handsome, glossy leaves. White flowers in drooping clusters in April. Provide protection. 15-18 in., \$3.95 each.

***RHODODENDRON carolinianum** (*Carolina Rhododendron*). 6 ft. Pale pink flowers in May; stems red; relatively small, dark green leaves. Makes a rounded, compact plant. 12-18 in., \$3.95 each.

***R. catawbiense** (*Catawba Rhododendron*). 6 ft. Beautiful, large flowers, red in bud, lilac-pink when open. June. Handsome, heavy foliage. 12-18 in., \$3.95; 18-24 in., \$5.50 each.

***R. Hybrid, Roseum Elegans**. Rose-pink flowers in June. 15-18 in., \$5.00 each.

VINCA minor, Bowles Variety (*Myrtle*). A superb ground cover with shiny, dark green leaves and lilac-blue flowers in Spring. Does well in sun or shade. Good for holding banks. \$3.00 for 10, \$25.00 for 100.

EVERGREENS

These Evergreens are offered for sale at our nursery or within local truck delivery zone only

All Are Balled and Burlapped, and Selected Plants

CHAMAECYPARIS - Falsecypress

This is a diversified group of evergreens; many make tall, narrow specimens and others are quite dwarf pyramids. They are amenable to trimming and may be kept low if not neglected. They are soft, graceful trees with finely cut foliage.

Chamaecyparis pisifera filifera (*Thread Falsecypress*). Light green foliage grows in small, rounded forms which hang like threads. Slow growing pyramidal shape. 18-24 in., \$3.50 each; 2-2½ ft., \$4.00 each.

C. pisifera filifera aurea (*Golden Thread Falsecypress*). Very slow growing. Bright yellow, pendulous foliage. 12-15 in., \$3.00 each; 15-18 in., \$3.50 each; 18-24 in., \$4.00 each.

C. pisifera plumosa (*Plume Falsecypress*). Pyramidal tree with bright green, feathery branchlets. 2-3 ft., \$3.75 each; 3-4 ft., \$5.00 each.

C. pisifera plumosa aurea (*Golden Plume Falsecypress*). Its golden foliage makes a bright color contrast in evergreen plantings. 2-2½ ft., \$3.75 each; 2½-3 ft., \$5.00 each.

JUNIPERUS - Juniper

Juniperus chinensis pfitzeriana (*Pfitzer Juniper*). Low, broad, flat-topped evergreen with gray-green, plume-like branches. Will stand some shade. 15-18 in., \$4.00 each; 18-24 in., \$5.00 each; 2-2½ ft., \$6.50 each; 2½-3 ft., \$8.00 each.

J. communis hibernica (*Irish Juniper*). Tall, narrow, gray-green column. 2-3 ft., \$2.75 each.

J. excelsa stricta (*Spiny Greek Juniper*). Dense and compact pyramid of blue-green. Slow growing. 18-24 in., \$3.50 each.

J. virginiana cannarti (*Cannart Red Cedar*). Dense column of rich dark green. 2-3 ft., \$5.00 each; 3-4 ft., \$7.00 each.

PICEA - Spruce

Picea alba (*White Spruce*). Makes a tall tree, like the well-known Norway Spruce. Silvery-green foliage. 2-3 ft., \$4.00 each; 3-4 ft., \$5.00 each; 4-5 ft., \$7.00 each; 5-6 ft., \$8.00 each.

P. excelsa (*Norway Spruce*). Makes a stately specimen and is valuable for screens, hedges and windbreaks. Grows rapidly. 2-3 ft., \$4.00 each; 3-4 ft., \$5.00 each; 4-5 ft., \$7.00 each.

P. omorika (*Serbian Spruce*). Slow growing. Narrow pyramid of splendid dark green. 18-24 in., \$4.50 each; 2-3 ft., \$5.50 each.

P. pungens (*Colorado Spruce*). Tall, stately, formal pyramid. Grows moderately fast. 3-4 ft., \$6.00 each; 4-5 ft., \$7.50 each; 5-6 ft., \$9.00 each.

P. pungens glauca. Like above, but with blue-green foliage. 18-24 in., \$6.00 each; 2-3 ft., \$8.00 each.

P. pungens. Grafted blue. The bluest form of Spruce. Slow growing. 18-24 in., \$8.00 each; 2-2½ ft., \$10.00 each; 2½-3 ft., \$12.00 each; 3-3½ ft., \$15.00 each.

THUJA - Arborvitae

Thuja occidentalis globosa (*Globe Arborvitae*). Dwarf, slow growing globe. 15-18 in., \$2.50 each; 18-24 in., \$3.50 each; 2-2½ ft., \$4.50 each.

T. occidentalis lutea (*Goldtipped Arborvitae*). New growth a bright yellow. 2-3 ft., \$4.50 each; 3-4 ft., \$6.00 each.

T. occidentalis pyramidalis (*Pyramidal Arborvitae*). Compact pyramid of dark green. Slow growing. 18-24 in., \$2.75 each; 2-3 ft., \$4.50 each; 3-4 ft., \$5.50 each.

T. occidentalis nigra (*Dark American Arborvitae*). Deep green. Fine, compact form. 2-3 ft., \$4.50 each; 3-4 ft., \$5.50 each.

T. occidentalis rosenthalli (*Rosenthal Arborvitae*). Dense cone of dark green. Slow growing. Splendid type. 2-2½ ft., \$4.50 each; 2½-3 ft., \$5.50 each; 3-4 ft., \$7.00 each.

T. occidentalis wareana (*Siberian Arborvitae*). Robust sort, forming a broad, symmetrical cone. 2-3 ft., \$4.50 each; 3-4 ft., \$5.50 each.

TAXUS - Yew

Taxus cuspidata (*Spreading Yew*). Rapid growing and wide spreading if not trimmed. Splendid dark green. 15-18 in., \$4.00 each; 18-24 in., \$5.50 each; 2-2½ ft., \$7.50 each.

T. cuspidata capitata (*Upright Yew*). A majestic, upright form; superb for specimens, hedges or in groups. Keep trimmed. 15-18 in., \$4.00 each; 18-24 in., \$5.50 each; 2-2½ ft., \$7.00 each; 2½-3 ft., \$9.00 each; 3-3½ ft., \$12.00 each.

T. cuspidata columnaris. A tall, narrow type. 18-24 in., \$5.00 each; 2-3 ft., \$6.50 each; 3-3½ ft., \$7.50 each.

T. cuspidata nana (*Dwarf Yew*). Stubby leaves and branches. Makes a rounded cushion. Slow growing, but keep awkward branches sheared. 12-15 in., \$4.00 each; 15-18 in., \$5.50 each; 18-24 in., \$7.50 each; 2-2½ ft., \$10.00 each.

T. intermedia (*Intermediate Yew*). Not as rank as *T. cuspidata*; foliage is denser. Excellent for foundation plantings. *Spreading type*: 15-18 in., \$5.50 each; 18-24 in., \$7.50 each; 2-2½ ft., \$9.00 each. *Upright type*: 18-24 in., \$6.50 each; 2-2½ ft., \$7.50 each; 2½-3 ft., \$9.00 each.

T. media hicksi (*Hicks Yew*). Narrow and upright when young but broadens into a wide pyramid. Heavy green foliage. Superb for hedges. 18-24 in., \$5.00 each; 2-2½ ft., \$6.00 each; 2½-3 ft., \$8.00 each; 3-3½ ft., \$10.00 each.

T. media hatfieldi (*Hatfield Yew*). Transplants for hedges. 10-12 in., \$1.25 each (\$1.00 each in quantities of 10 or more).

TSUGA - Hemlock

Tsuga canadensis (*Canada Hemlock*). A graceful tree, unexcelled for tall hedges, massing or as specimens. Trimming makes it more compact. A rapid grower, shade tolerant and very hardy. 18-24 in., \$4.00 each; 2-3 ft., \$5.50 each; 3-4 ft., \$7.50 each; 4-5 ft., \$10.00 each.

Barnes Evergreen Trees and Shrubs



Pieris japonica



Hybrid Rhododendron, Roseum Elegans



Spreading Yew (*Taxus cuspidata*)



Mountain Laurel

See page 11 for Evergreen
Trees and Shrubs



Spiny Greek Juniper



Catawba Rhododendron



Upright Japanese Yew

Barnes Flowering and Shade Trees



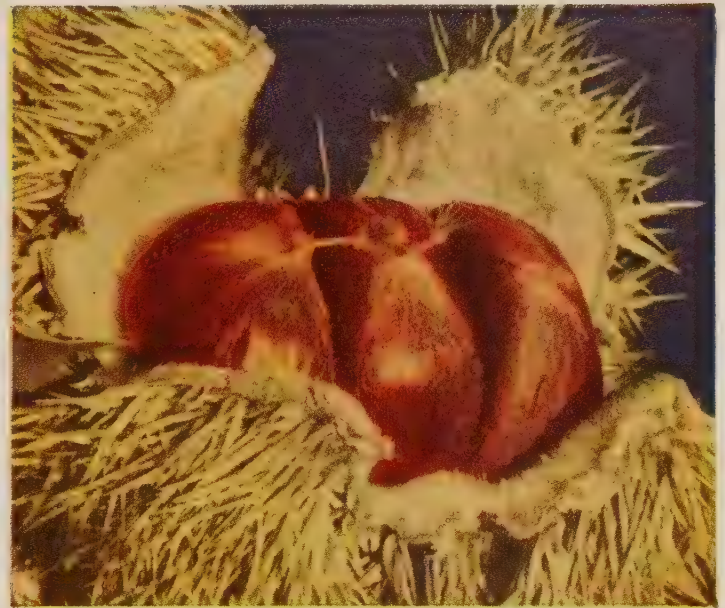
White Birch



Pink Flowering Dogwood



Flowering Cherry, Kwanzan



New Chinese Chestnut

For
descriptions
and prices
see page 10



Willson Wonder
English Walnuts



Carmine Flowering Crabapple



Magnolia Soulangeana

FRUIT TREES

Peach Trees

Ripening periods stated are for average conditions in Connecticut.

9/16 in. caliper, 4-5 ft. high, \$1.25 each, \$10.00 per 10, \$90.00 per 100

Belle of Georgia. An old, reliable, white-fleshed Peach. Red cheeks. Ripens in late August.

Elberta. The standard commercial Peach. Large, yellow with red cheek. Freestone. Ripens in early September.

Golden Jubilee. Large, yellow red blushed. Fine flavor. Freestone. Mid-August. Popular for homes and orchards.

Halehaven. Large, round, yellow Peach of excellent quality. High color. Freestone. Ripens after Golden Jubilee and before Elberta. Heavy bearer. Recommended for freezing.

J. H. Hale. Very large, yellow, red cheek. Freestone. Ripens early September; fine quality and flavor.

Red Haven. An excellent early yellow Peach. Skin smooth and a bright red. Freestone. Flesh firm, sweet, and delicious. Trees hardy, vigorous and productive.

Summercrest. Deep yellow flesh, sweet and delicious. Tree is a strong grower. Ripens in late August.



Peach, Hale-haven



Apple, Delicious

Barnes Selected Apple Trees

Baldwin. Favorite Winter Apple for all uses. Large, bright red; crisp and juicy.

Cortland. Large, dark red, white-fleshed McIntosh type. A popular kind for home and orchard planting. Ripens in October.

Delicious. Large, solid dark red. High quality. Splendid keeper. Fine Winter eating Apple.

Early McIntosh. August ripening. McIntosh-like in texture, flavor and appearance.

Galbraith Baldwin. A new, all red type of the favorite hard, tasty Winter Apple.

Gallia Beauty. A new bright red form of Rome Beauty. A prolific and early bearer of late keeping Winter Apples.

Gravenstein Red. Large, crisp, slightly tart. Excellent cooking Apple. September.

Lodi. Similar to Yellow Transparent in color, quality and flavor. This new variety is larger, firmer and ripens a few days later.

Macoun. A late McIntosh. Dark red, white flesh with a superb flavor. Popular Winter Apple.

McIntosh Red. Dark red, white, juicy flesh. A favorite in northeastern orchards. September.

Northern Spy. Bright red. High quality and flavor, late keeping. Winter.

Rhode Island Greening. Large, yellow-green, highly flavored, keeps late. An unexcelled Winter cooking Apple.

Roxbury Russet. Yellow-green overspread with russet. An old favorite which keeps well.

Hyslop Crab. Bright red. October.

2-YR. APPLE TREES

11/16 in. and up—Height 5-7 feet
 1-9... Each \$1.75 50-99... Each \$1.10
 10-49. Each 1.45 100 or more. Each .95
9/16 in. to 11/16 in.—Height 4-6 feet
 1-9... Each \$1.35 50-99... Each \$0.90
 10-49. Each 1.10 100 or more. Each .80

DWARF APPLE TREES

Semi-dwarf Apple Trees, 2 year—\$3.00 each:
 Baldwin, Cortland, Delicious, Lodi, Red Spy, McIntosh and Red Gravenstein.

Full Dwarf (Malling IX), 2 year—\$3.75 each:
 Delicious, Macoun, McIntosh, Red Spy.

Pear Trees

Prices of Pears: 2 yr., 11/16 in. diameter, 5-6 ft. high, \$2.00 each, \$15.00 per 10, \$100.00 per 100

Bartlett. Most popular Pear for home and market use; fine quality, rich flavor. Ripens in September.

Beurre Bosc. Very large, deep yellow, overspread with russet. Unsurpassed in quality and flavor. October and November.

Clapp's Favorite. Large, red blushed; good quality; the earliest Pear. Ripens late August.

Seckel. Small, round, russet Pears. Sweet and of finest quality; trees productive and hardy. October.

Sheldon. Large, round, russet and red Pears of first quality. September and October.

DWARF PEARS

2-Year, \$3.00 Each

Bartlett **Clapp's Favorite**

Duchess. Enormous Pears, delicious, sweet and juicy; ripen in October.

STATEMENT OF INSPECTION FOR TRUENESS-TO-NAME

Amherst, Mass.
 July 24, 1951

To Whom It May Concern:

All of the apple varieties propagated and now growing at Barnes Brothers Nursery Company, Yalesville, Connecticut, have been examined by the Massachusetts Trueness-to-name Inspection Service. To the best of our knowledge, these trees are true to name as they now stand in the nursery row.

A. P. FRENCH

Plum Trees

Abundance. Red cheeks, yellow flesh. Juicy. August.

Burbank. Amber suffused with red. Late Summer.

Green Gage. Yellow-green, juicy and sweet.

Santa Rosa. Large, dark red Plums. Flesh is red, juicy and of good quality. Will pollinize Burbank or Abundance.

Stanley. Purple Prune. Sweet, yellow flesh. **2-year, 11/16 in. diameter, \$2.00 each, \$15.00 per 10**

Cherry Trees

Black Tartarian. Sweet. Purplish-black with splendid flavor. Tree vigorous and productive. A favorite.

Napoleon (Royal Anne). Sweet. Pale yellow with bright red blush. Large; delicious flavor. Excellent for canning. Midseason.

Montmorency. Sour. Large, light red. Mid-season. Tree comes into bearing young. Productive.

Cherry prices: 11/16 in. diameter, branched, \$2.25 each

Hansen's Bush Cherries. These dwarf, bushy Cherry-Plum hybrids are hardy, easily grown, bear heavily, usually a year after planting. Fruit resembles a small, dark red Plum and makes good preserves. Plant in groups for cross pollination. 2-3 ft., 75c. each.

QUINCE

Orange. Bright golden yellow. Large, rounded fruits with splendid flavor. Fine for preserves and jelly. October. Trees are dwarf and bear when young. 2 year, \$2.00 each.

APRICOT

Early Golden. Golden yellow fruit of good size and quality. An excellent variety to cross-pollinate Moorpark. 9/16 in. diameter, \$2.00 each.

Moorpark. Orange yellow, sweet, juicy. Ripens in August. This is one of the hardiest Apricots. 9/16 in. caliper, \$2.00 each.

FROM

Place
Stamp
Here

The BARNES BROS. NURSERY CO.

“The Original Barnes Nursery”

YALESVILLE, CONN.



SMALL FRUITS

Giant Hybrid Blueberries

These improved, cultivated Blueberries have produced wonderfully large, plump, tender fruits of delicious flavor. It is essential that they be planted in groups of more than one variety in order to insure cross pollination.

Besides producing this superb fruit, these plants are ornamental at all times of the year. They are suitable to include in a shrub border, growing about 6 feet or more high and their Fall coloration is brilliant.

Blueberries require an acid soil containing an abundance of vegetative matter, like peat, moderate soil moisture and good drainage. Plant about 4 feet apart. Blueberries require pruning to maintain large-sized fruits.

We offer the following varieties of fruiting age: Strong, transplanted, 3 yr. plants, 18-24 in. high at \$1.75 each, 3 for \$4.50, 6 for \$9.00, 12 for \$15.00

Concord. Large berries borne in Grapelike clusters; fine in flavor and appearance. Midseason.

Dixi. Late midseason. Very large berry of good quality. Vigorous, productive. Open, spreading bush.

Jersey. Large berries which keep well. Late. Plants vigorous.

June. Early. Fine producer. Good quality. Bush of medium height.

Pemberton. Midseason. Large, attractive and tasty berries. Vigorous and productive.

Stanley. Excellent quality. Light blue. Productive. Midseason.

BLACKBERRIES—Eldorado

Vigorous, hardy and prolific. Berries are large, jet black, and borne in large clusters, which ripen well together. Flavor is good. No hard core.

10 for \$2.00, 25 for \$4.00, 100 for \$10.00



Blueberries, Dixie

RED RASPBERRIES

Indian Summer. A splendid, everbearing red Raspberry. Delicious flavor. Grand kind for home gardens; heavy crops in June and again in Fall. Selected, 1-yr. plants.

Latham. Bright red, large and firm; delicious flavor. Plants are strong, yield tremendous crops. The leading Red Raspberry. Selected, 1-yr. plants.

Taylor. Berries are large, conic, bright red; firm, of excellent quality and ripen just ahead of Latham. Plants are tall and vigorous.
10 for \$2.00, 25 for \$4.00, 100 for \$12.00

GRAPES

- Caco.** Red.....Midseason
 - Concord.** Blue.....Midseason
 - Fredonia.** Black.....Early
 - Niagara.** White.....Midseason
 - Portland.** White.....Early
 - Sheridan.** Blue.....Late
- 2 year, No. 1, 50c. each, 10 of one kind, \$4.00**

Black and Purple RASPBERRIES

Cumberland. A fine black Raspberry. Hardy, productive, dependable and disease-resistant.

Sodus. Rich, dark wine-purple berries of excellent quality and flavor. Large and firm. Bears very heavy crops.

Both varieties:
10 for \$2.00, 25 for \$4.00, 100 for \$12.00

PLANTING NOTE FOR BLACK AND RED RASPBERRIES

Be sure to cut the canes back within a few inches of the ground immediately after planting.

ASPARAGUS

GARDEN FRESH ASPARAGUS TASTES BETTER

Mary Washington. Rust-resistant. Recognized as a leading variety, Asparagus will grow in any garden soil but to produce the largest, most tender stalks the soil must be rich and well fertilized. Strong, 2-year roots, 25 for \$1.50, 50 for \$2.50, 100 for \$4.00.

RED RHUBARB

AN EARLY SPRING DELICACY

MacDonald. Considered the finest of the new red Rhubarbs. Excellent quality and flavor, less tart than older kinds. Hardy, of Canadian origin and quick to grow. 60c. each, 3 for \$1.50.

Scott's Lawn Care Products

Not Prepaid

Scotts Lawn Seed. Top quality blend of perennial grasses for planting in open sun or moderate shade. 4 lbs. per 1000 sq. ft. needed for seedling new lawns, half as much for thickening established lawns.

Lb.....	\$1.50	25 lbs.....	\$35.50
5 lbs.....	7.35	100 lbs.....	140.00

Scotts Special Purpose Blend. Selected seed formula for deep shade, drier soils, terraces and play areas. *Rate:* New lawns—6 lbs. per 1000 sq. ft., proportionately less for reseeding.

Lb.....	\$1.25	25 lbs.....	\$29.50
5 lbs.....	6.15	100 lbs.....	115.00

Turf Builder. Turf Builder feeds lawns better for less—use 1 lb. per 100 sq. ft. stead of 3 lbs. required for ordinary fertilizers.

10 lbs.....	\$1.35	50 lbs.....	\$3.95
25 lbs.....	2.50	100 lbs.....	7.85

Scotts Weed & Feed. A double acting, dry, compound that kills broadleaved weeds like Dandelion, Buckthorn and simultaneously provides a complete lawn feeding.

Box, 500 sq. ft.....	\$1.00
Box, 2500 sq. ft.....	2.95
Bag, 11,000 sq. ft.....	11.75
10 bags, 2½ acres.....	99.50

4-XD Weed Control. For broadleaved weeds. Same potent chemicals as in Scotts Weed & Feed, but without lawn food. No fuss or mixing with water. Dry applied—as it comes from package.

Box, 500 sq. ft.....	\$0.49
Box, 2500 sq. ft.....	1.75
Bag, 11,000 sq. ft.....	4.85
10 bags, 2½ acres.....	39.50

Scotts Spreaders. Sturdy, all steel with rubber tires. For quick and accurate seeding, weeding, and feeding. Rate control and shut-off on handle.

Junior Spreader.....	\$7.35
No. 25 Medium Size.....	12.50

Finest Canadian Horticultural Peat Moss. Use liberally in all planting. A heavy mulch of peat moss is especially valuable for broadleaved evergreens, blueberry and other acid loving plants.

Jumbo bale.....	\$5.50
Junior bale.....	3.50
2 bushel bag.....	1.98

(Not prepaid)

Agrinite. An all organic fertilizer with 8.25% Nitrogen. Use 4 lbs. for 100 sq. ft.

80 lb. bags.....	\$4.25 each
------------------	-------------

(Not prepaid)

PRATT'S SPRAYS AND DUSTS SIMPLIFY SPRAYING IN THE HOME ORCHARD AND GARDEN

Pratt's Fruit Tree Spray or Dust. An all-purpose spray or dust for fruit trees whereby it is possible to control chewing insects and fungous diseases with a single material. It is used with safety on Apples, Peaches, Pears, Plums, Prunes and certain ornamentals.

1-lb. Sifter Canisters.....	\$0.75
3-lb. bags.....	1.35

(Not prepaid)

Pratt's Garden and Rose Dust. An all-purpose garden and rose dust, providing a single product to combat the majority of sucking and chewing insects and fungous diseases on all flowers and vegetables—especially effective on roses.

Duster containing 1 lb. of dust.....	\$1.35
2 lb. canister of dust.....	1.50

(Not prepaid)

Pratt's DX Insect Spray. To control insects on fruits, flowers, vegetables, ornamentals, shade trees. Combines with fungicides for an all-purpose spray.

1½ oz.....	\$0.50	8 oz.....	\$1.75
4 oz.....	1.00		

(Not prepaid)

Pratt's DX Nicotine Spray. A nicotine spray to control sucking insects, especially Aphids.

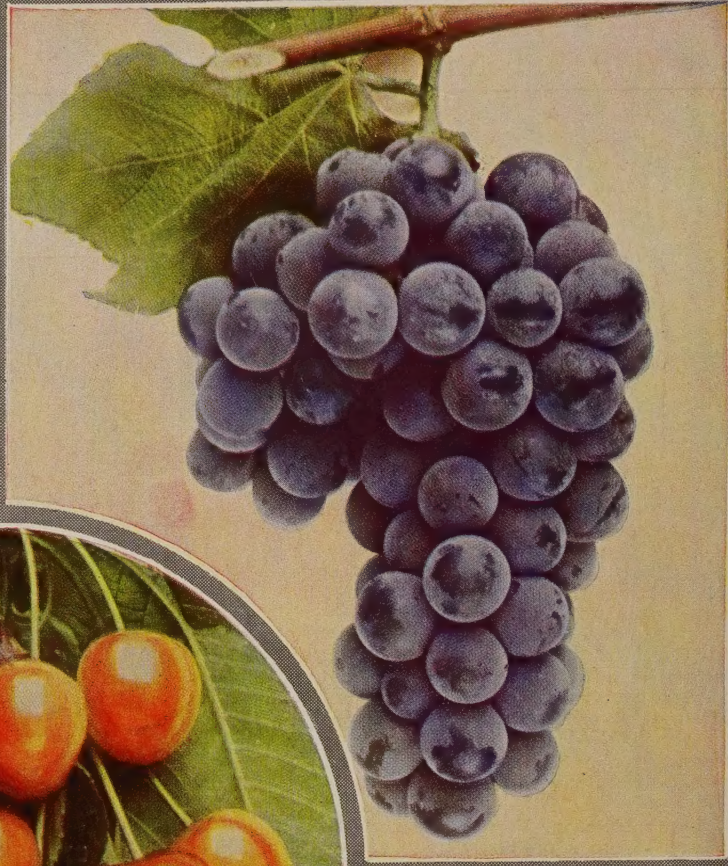
4 oz.....	\$1.00	8 oz.....	\$1.75
-----------	--------	-----------	--------

(Not prepaid)

Scalecide. Complete dormant spray for fruit trees, shrubs, and vines.

Qt. cans.....	\$1.00	Gal. cans.....	\$2.50
---------------	--------	----------------	--------

(Not prepaid)



Halehaven Peach
Stanley Plum

Napoleon Cherry

Concord Grape
Beurre Bosc Pear

The Barnes Brothers Nursery Company

Route U. S. 5, South of Wilbur Cross Parkway

Telephone: Wallingford 9-4226

YALESVILLE, CONN.